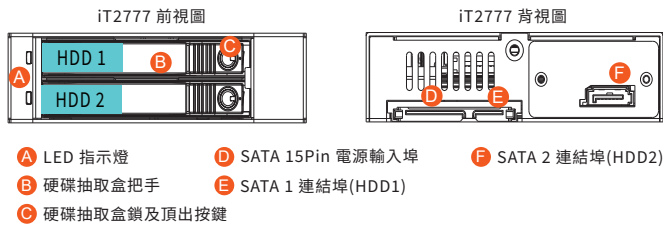
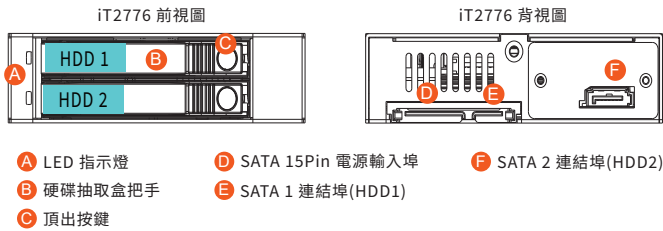
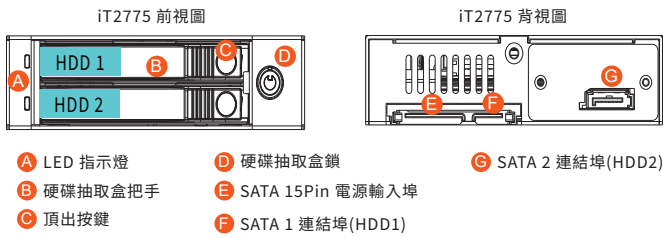


RAIDON

iT2775 & iT2776 & iT2777 快速安裝導引

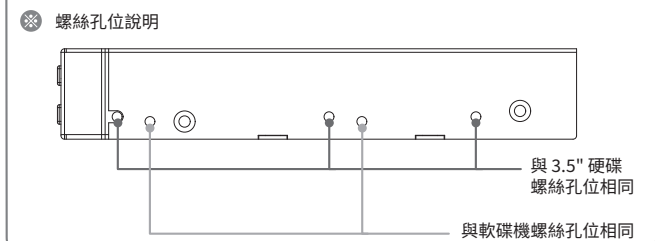
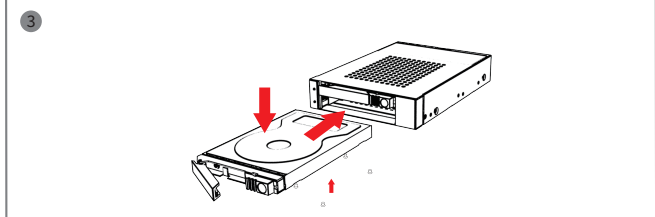
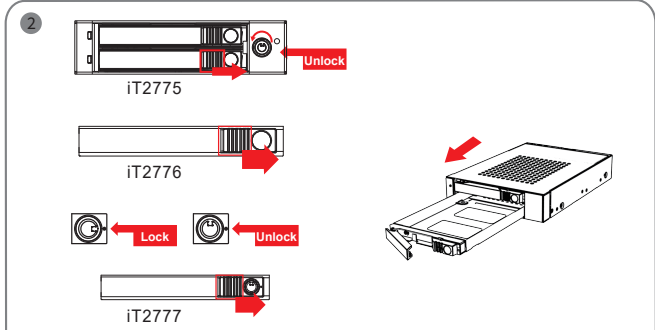
產品示意圖與配件表



1

V1.0 (Nov. 2022)

- iT2776: 將頂出按鍵向右推移, 硬碟抽取盒把手便會彈開, 即可取出抽取盒。
iT2775 & iT2777: 使用配件內附的鑰匙解鎖硬碟抽取盒鎖後, 將頂出按鍵向右推移, 硬碟抽取盒把手便會彈開, 即可取出抽取盒。
- 在抽取盒上安裝 2.5 吋硬碟, 請使用 4 顆零件包內附的小顆螺絲加以固定; 再將抽取盒裝回 iT2776 & iT2775 & iT2777



3

打開包裝外盒後, 包裝內容應包含下列組件:

產品本體x1(內含抽取盒x2)	
快速安裝導引 x1	螺絲及鑰匙(iT2775 或 iT2777)

- 請先確認相關配件與產品本身是否有受損或是缺少配件, 若有任何疑問, 請與您的經銷商或業務人員聯絡。
- 請前往官網 (www.raidon.com.tw) 下載說明書、驅動程式以及其餘相關資源。

燈號說明

使用SATA硬碟

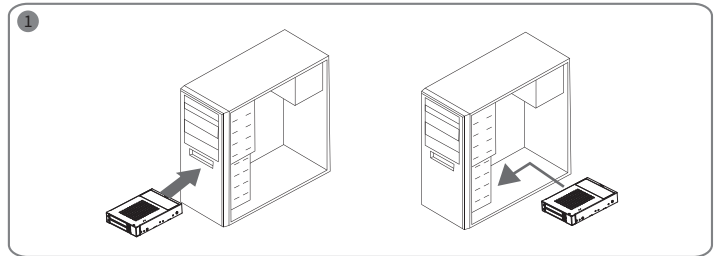
狀態	硬碟燈號
硬碟閒置	藍燈恆亮
資料存取	藍燈閃爍
無硬碟	藍燈恆亮

- 註 1: 依據使用的SSD會有不同的燈號狀態。
註 2: 如SSD有支援, 資料存取時LED有閃爍功能; 如無支援, 則無閃爍功能。

硬體安裝

請參照下列步驟, 完成 iT2775 & iT2776 & iT2777 的硬體安裝:

- 將主體裝置在機殼上, 連接相關連接線, 並確認固定螺絲是否鎖上。



2

- 硬體安裝完成。您可開啟電源進行相關設定與應用。
- 作業系統將會自行辨識硬體, 辨識成功後請先完成硬碟格式化, 完成後即可使用。

產品使用注意事項

- 強烈建議除了使用 iT2775 & iT2776 & iT2777 的資料儲存功能外, 請針對重要資料備份到另一個儲存裝置或遠端備份, 雙重備份您重要的資料。若您儲存在 iT2775 & iT2776 & iT2777 的資料損毀或遺失, RAIDON 將不負任何的責任。

感謝您使用 銳鉸科技股份有限公司 的產品。

本手冊裡的資訊在出版前雖然已經被詳細確認, 但實際產品規格將已出貨時為準; 任何的產品規格或相關資訊更新, 請您直接上 www.RAIDON.com.tw 網站查詢, 或直接與您的業務聯絡窗口聯繫, 本公司將不另行通知。

如果您對 銳鉸科技 的產品有任何疑問, 或是想獲得最新產品訊息、使用手冊或韌體, 請您聯絡 supporting@raidon.com.tw, 我們將儘速回覆您。

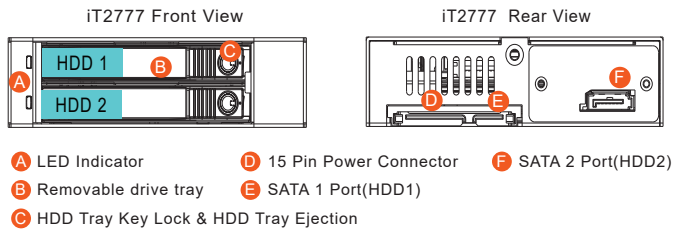
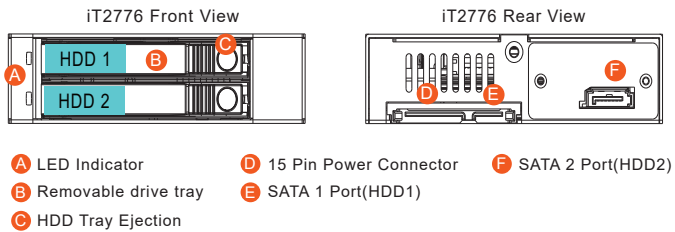
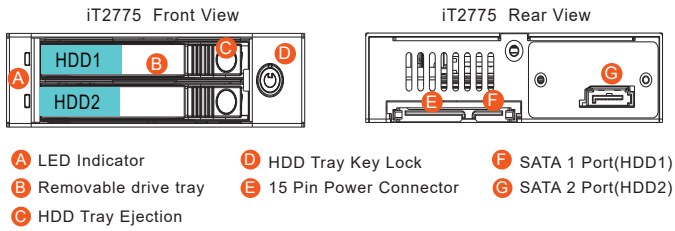
RAIDON 為 銳鉸科技股份有限公司 旗下品牌之一
本說明相關產品內容歸 銳鉸科技股份有限公司 版權所有

4

RAIDON

iT2775 & iT2776 & iT2777 Quick Installation Guide

Product Diagrams and Contents of Product Package



V1.0 (Nov. 2022)

1

After you open the outer package, make sure that the following items are contained in the package:

Product x 1 (with removable drive tray enclosed x 2)	
Quick Installation Guide x1	Screws & Ejector pins (iT2775 或 iT2777)

- Please check the product and accessories for any defect or missing parts. If you have any questions, please contact your product supplier.
- Please visit the official website (www.raidon.com.tw) to download user manuals, drivers and other related resources.

LED Instruction

When Using SATA Hard Drives

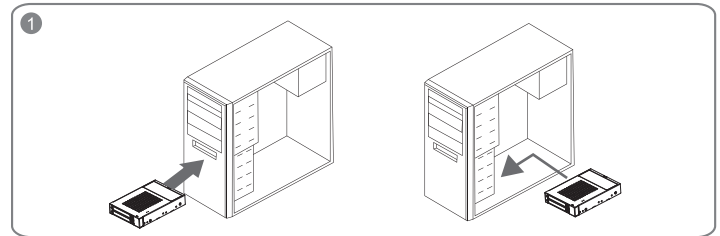
Status	HDD Status Light
HDD idle	Blue light always on
Data access	Blue light flashing
No HDD	Blue light always on

- Note1: While using a different SSD Hard Drives, the LED Indication might be with a different light set.
 Note2: If the SSD is supported, the LED has a flashing function during data access; if there is no support, there is no flashing function.

Hardware Installation

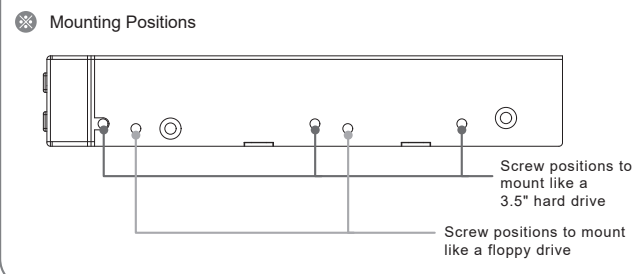
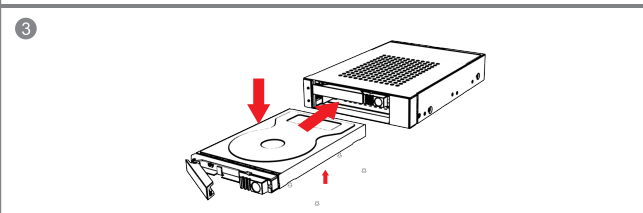
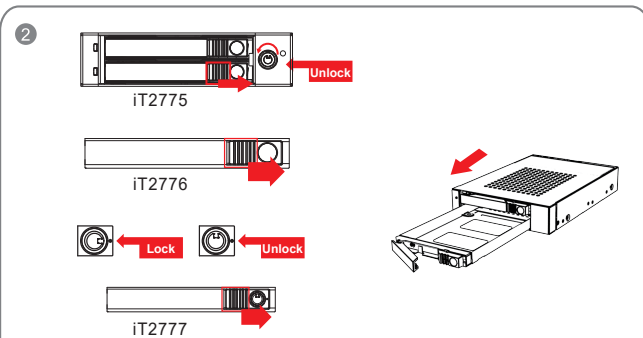
Please install iT2775 & iT2776 & iT2777 as the following instruction.

- Install the product unit into the computer chassis and make the necessary connections and mount the product unit properly and securely to the bay position desired.



2

- Push the HDD tray ejection to the right and the removable drive tray will pop open to remove the removable tray.
- For 2.5" HDD/SSD, please secure it by use four the smaller screws included in the accessory kit. and re-insert the removable tray when completed.



3

- When hardware installation is completed, you can turn on the power of the main unit to proceed with relevant settings and applications.
- Installation completed. Your operating system should automatically detect the hard drives within. Please proceed to format the drives. Once formatting is completed, you may then start to operate the device.

Precautions Before Application

- We strongly recommend you to keep an extra copy at your important personal data other than stored in your iT2775 & iT2776 & iT2777 product. RAIDON will not be responsible of your data loss problem.

Thank you for choosing RAIDON's product.

The information provided in this manual was checked before publication, but the actual product specifications may have changed before shipping; Latest product specifications and updates can be found at www.RAIDON.com.tw or through your sales representative. No separate notifications will be provided by our company.

If you have any questions about RAIDON products or would like to receive the latest product information, instruction manuals, or firmware, please contact Supporting@raidon.com.tw for assistance.

RAIDON is one brand under RAIDON TECHNOLOGY, INC.

All product-related content in this manual are copyrighted by RAIDON TECHNOLOGY, INC.

4